

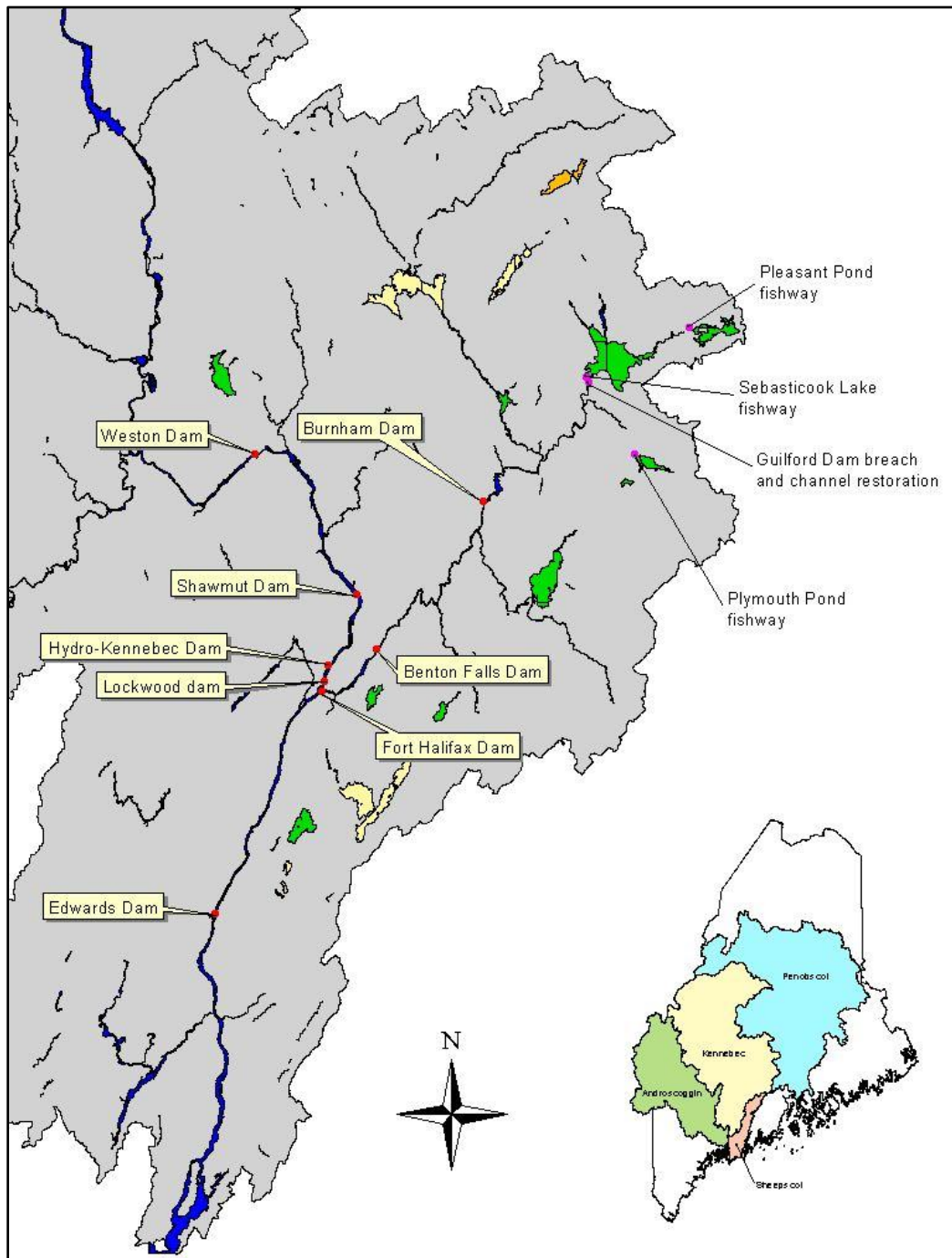
Since most of Winslow's history stems from the fact that it is strategically located along two major rivers, there is a natural link between discussing the town's historic and water resources. The Kennebec River is one of the state's main waterways, beginning at Moosehead Lake, passing through the state capitol, and eventually flowing into Merrymeeting Bay and the Atlantic Ocean. The Sebasticook River is arguably the Kennebec's major tributary, beginning its own southern journey far to the northeast of Winslow. A third major waterway in the town is Outlet Stream, which flows north from China Lake, eventually connecting with the Sebasticook a short distance east of the Kennebec River. Other than rivers and streams, Winslow contains two large lakes. Northeast of the geographic center of town is Pattee's Pond, while Mud Pond lies in the far southeastern corner (approximately 20% of Mud Pond being in the town of China).

Kennebec River

The Kennebec River forms the western boundary of the town, flowing for approximately 6.5 miles northeast to southwest. As discussed in the Historic and Archaeological Resources chapter, this river is one of the most significant in Maine, and has a distinguished national profile, as well. Though used industrially for centuries, including by the Scott Paper Company Mill in Winslow, the past few decades have ushered in a new perspective of viewing and using the river in a sustainable manner. It is a tribute to both Mother Nature and personal effort that in the three decades since the passage of the Clean Water Act (co-authored by Maine Senator Edmund Muskie), when its water was listed as unsafe for human activity, the Kennebec River has become a recreational haven.

In 1986, the Kennebec River Diadromous¹ Fish Restoration Project was initiated when the Maine Department of Marine Resources signed a settlement agreement with the Kennebec Hydro-Developers Group (KHDG), owners of seven hydropower projects located upstream of Edwards Dam. Built in 1838 at the head-of-tide in Augusta, the Edwards Dam presented a physical barrier (to upstream fish migration) and a mental barrier (to a clean, natural waterway as the 150 years following its construction were the most heavily industrial in the river's history). The goal of the Fish Restoration Project was to restore Maine's native diadromous fishes to their historic range and abundance. The Project initially provided funds for stocking native fish in upstream habitats. In 1998, the Project expanded to include federal fisheries resource agencies and non-governmental agencies, in addition to the state and KHDG. This major collaboration resulted in the removal of Edwards Dam, providing fish passage to historic spawning habitat for Atlantic sturgeon, shortnose sturgeon, and rainbow smelt. However, for species such as alewife, American shad, and Atlantic salmon, which traditionally migrated much further into the watershed, the 1998 agreement also instituted schedules or triggers for fish passage at all seven KHDG dams.

¹ Diadromous is a general term referring to fishes that migrate between the ocean and freshwater to complete their life cycle.



Seven Dams of the Kennebec Hydro-Developers Group

Map courtesy State of Maine

As with its construction, the removal of Edwards Dam was both a physical and mental change for the Kennebec River. The 1964 Winslow Comprehensive Plan stated that, “Industrial and sanitary wastes from the [Scott Paper Company Mill] are dumped without treatment into the

Kennebec River.” (p. I-2) This is most definitely no longer the case, as fish are not only “rediscovering” their traditional habitat, but also swimming in much cleaner water.

Maine has maintained a water classification system since the 1950s, and with the passage of the federal Clean Water Act in the 1970s, the system experienced an overhaul. Now every waterway must maintain the base level of quality allowed under the Clean Water Act, and today’s lowest classified state waterways maintain that basic fishable-swimmable standard. The classification standards established designated uses, related characteristics of those uses, the criteria necessary to protect the uses, and specific conditions for certain activities such as the discharge of wastewater. Upgrades to classification are desirable where there is a social or ecological necessity to attain higher standards, and where the technological and financial capacity exists to achieve those higher standards within a reasonable time. Once a classification assignment is made, and the uses and criteria are achieved, that goal is protected by the antidegradation provisions of State law. In this way, the State can continually move forward in the improvement and protection of water quality.

Maine has four classifications of water quality for freshwater rivers (AA, A, B, C), and 1 class for lakes and ponds (GPA). There is not a significant difference between the uses and qualities of classes, and the classification system itself should really be viewed as a hierarchy of risk, meaning the possibility of breakdown of the ecosystem and loss of use due to either natural or human-caused events. Ecosystems that are more natural in their structure and function are more resilient to a new stress and show more rapid recovery. Class AA and GPA waters fall into this category since major activities such as waste discharge and impoundment are prohibited. Class A, B, and C rivers have increasingly fewer restrictions, with Class C having the fewest possible restrictions, and typically the most unnatural structures.

The Kennebec is listed as a Class C river from Winslow’s northern border to the point where Messalonskee Stream empties into it from Waterville, roughly three-quarters of a mile south of Carter Memorial Bridge. From this point to Winslow’s southern border, the Kennebec is listed as a Class B river. Therefore, though the Kennebec River currently maintains a basic level of fishable-swimmable quality, extra vigilance is required to prevent its reversion to the dirty water of the 1960s. What little industrial development remains in Winslow all lies within the Kennebec River’s direct watershed.

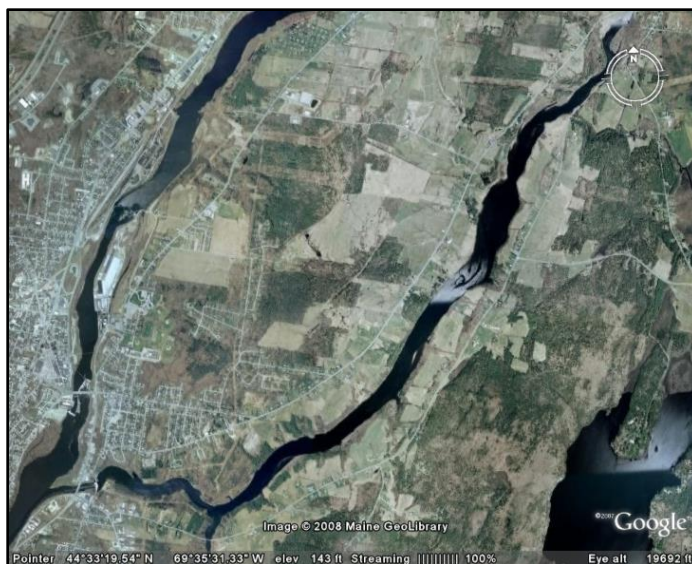
It must also be noted that point-source discharges to waterways still occur. The Clean Water Act requires that discharges be processed and cleaned prior to entering the water. In many cases, it was easier to simply remove the point-source discharge than install the necessary cleaning equipment. Nonetheless, 2 wastewater outfalls, emanating from the town of Winslow, do empty into the Kennebec River. Wastewater outfalls refer to pipes carrying sanitary and other wastes from municipal and industrial sources that have been properly treated and cleaned. These

outfalls are permitted by the State Department of Environmental Protection, and are monitored to maintain the standards required by the Clean Water Act.

Sebasticook River

The Sebasticook River flows approximately 3 ¼ miles south-southwest through Winslow from Benton and points north. It flows in this direction until it reaches 1 mile more or less from the Kennebec River, at which point it curves and basically flows due west. During its journey through Winslow, the Sebasticook is fed by two great ponds. At Winslow's northern border, the outlet stream for Pattee's Pond meets with the Sebasticook. Farther south, at the point where the river curves to flow west, the Outlet Stream from China Lake enters into the Sebasticook. Though each of these tributary streams are class B waterways, the Sebasticook itself is a class C river.

The Sebasticook River, like the Kennebec, spent the greater part of the 19th and 20th centuries as an industrial repository. The Sebasticook is also part of the Kennebec River Diadromous Fish Restoration Project. In fact, as part of this Project, the Fort Halifax Dam has been removed (removal just prior to publication of this plan). It will be interesting to study whether the river's classification will change following removal of the Fort Halifax Dam. Dams are a major human intervention with natural conditions, and for this reason are prevented in the highest classification



Sebasticook River

categories. Without a dam, and perhaps following years of natural vegetative re-growth, the Sebasticook may be re-classified as a B river. The Fort Halifax dam has also contributed to development along the river. It has widened the river's banks and provides beautiful views along the large waterway. Consequently, the shoreline has relatively little tree growth.

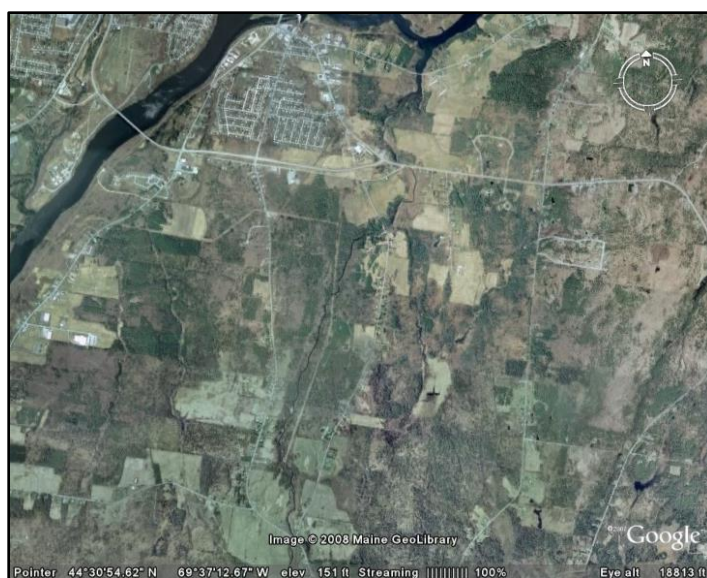
Like the Kennebec, the Sebasticook contains two point-source wastewater outfalls. These are also permitted by the DEP, and maintain a certain standard of water quality. The river also contains three overboard discharges along its banks. Overboard discharges, like wastewater outfalls, are basically pipes that send waste directly into a waterbody. In the 1970s and 1980s most direct pipe outfalls were removed, and residential and commercial developments were either connected to municipal treatment plants or an underground septic tank was installed. In

those cases where it was not feasible to connect to a municipal treatment system, or install a septic tank (typically due to poor soil conditions), an overboard discharge permit was issued. However, wastes that go through overboard discharges are treated and processed in much the same manner as a septic system, but instead of emptying into the ground for slow percolation the waste is directly piped to the waterbody.

Outlet Stream

The Outlet Stream refers to the larger stream carrying water from China Lake through the town of Vassalboro, and into the Sebasticook River. In some places this stream even widens to the point of being considered a minor river. The Outlet Stream is a class B waterway during its entire length within the town's border.

The Outlet Stream experiences approximately the same type of land uses as the Sebasticook River, meaning development has largely been confined to the area west of the Outlet Stream and east of the Kennebec River. Also similar to the Sebasticook, three overboard discharges empty into the Outlet Stream. Unlike the Sebasticook, however, there is no dam on the Outlet Stream in Winslow, and for much of the stream's length there is a nice wooded shoreline habitat.

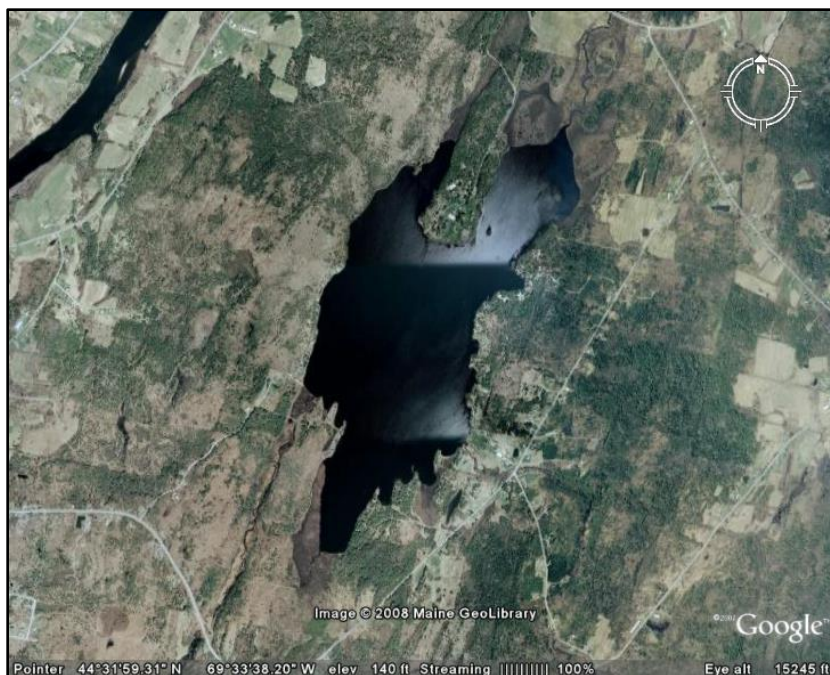


Outlet Stream

Pattee's Pond

Pattee's Pond is the only large and recreational-sized pond in town. It covers 523 acres, with a volume of 7,238 acre-feet, and is located slightly northwest of the geographic center of Winslow. Though large, Pattee's Pond is quite shallow, having a mean depth of 15 feet, and a maximum depth of only 27 feet. The flushing rate is only 2.13, meaning the water in the pond is replaced, or flushed out, only twice a year. This is a relatively low rate, and an indication of the pond's environmental sensitivity.

In 2006, Pattee's Pond's water clarity averaged 3.4 meters (as measured by Secchi disk), below the State average of approximately 4.5 meters for lakes. However, the pond's transparency has gradually improved over the last forty years. From the early 1970s through the 1980s, water clarity was 2.5 to 3 meters. In the 1990s, this improved by approximately one-half a meter, with readings ranging from 3 to 3.5 meters. With peak readings of about 3.8 in 2001 and 2003, it appeared that water clarity would increase by another one-half meter during the first decade of the 21st century. Unfortunately, since that clear reading in 2003, water clarity has slowly degraded



Pattee's Pond

back to 3.4 meters. Summer algal blooms do still occur on occasion, and many pond residents wish to reverse the short-term trend in water clarity.

Another measure of water quality is phosphorous, a naturally-occurring chemical that is also the limiting nutrient for plant growth in fresh waters. In an undeveloped, forested watershed, plant roots serve to filter out nutrients from soil. However, developed land may not contain this natural filter, and the phosphorous then flows directly into the pond or feeder streams, especially due to soil erosion along residential access streams. The increased phosphorous effectively fertilizes, or feeds, the algae, resulting in disproportionate and nuisance algae growth and blooms. In 1979, the total phosphorous load in Pattee's Pond was 19 parts per billion (ppb), and in 1981, it was 17 ppb. Approximately 20 years later, in 2000, the total phosphorous was measured at 19 ppb, and again in 2003 at 18 ppb. Concentrations of phosphorous at around these values generally result in algal blooms. It is critical to keep phosphorous concentrations lower, ideally less than 15 ppb.

Pattee's Pond is also a "colored" lake, meaning leaching from surrounding peat bogs through which water flows colors the water a tea brown. This natural coloring reduces clarity, contributing to the lowered Secchi disk readings.

The direct watershed of Pattee's Pond is 12.6 square miles, 95% of this being in the town of Winslow. Approximately one-third of the Pond's shoreline is undeveloped, while the remaining land consists largely of private residences. Given Winslow's history, the pond was "discovered" by tourists long ago, and camps were in place before serious attention was paid to water quality. Early cabins were built on lots containing as little as 50 feet of shore frontage, and many remain today. There is one private camping and recreation facility on the eastern shore, and the entire northern peninsula is owned by Camp Caribou, a summer camp for boys. The non-shoreline watershed remains largely rural, helping to preserve the pond's water quality. Beavers control lake outflow, and the large wetlands surrounding the outlet stream provide habitat for a wide variety of flora and fauna.

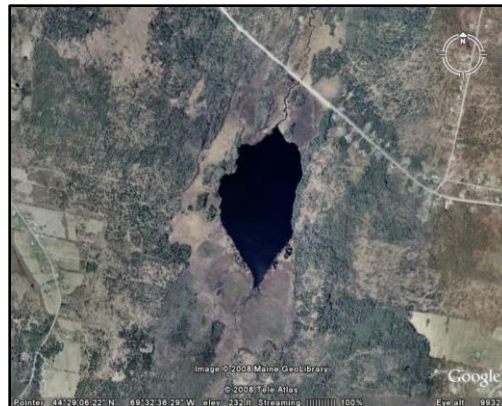


Sunrise on Pattee's Pond
Photo courtesy Daniel Watkins

As a Class GPA waterbody, Pattee's Pond is characterized as natural. No new direct discharges are allowed, and according to Title 38 M.R.S.A. section 465-A, "A change of land use in the watershed may not, by itself or in combination with other activities, cause water quality degradation that impairs the characteristics and designated uses of downstream GPA waters or causes an increase in the trophic state of those GPA waters." The trophic state is the degree of eutrophication of a lake, measured by such things as transparency and phosphorous. Thus, a decreasing transparency or increasing phosphorous measurement would translate to an increasing trophic state. Fortunately, as documented above, Pattee's Pond demonstrates long-term improvement, meaning it conforms to the water quality standards of Maine. Nonetheless, the Department of Environmental Protection lists Pattee's Pond as one of the Lakes Most at Risk from New Development, and the short-term trend in water clarity is an indication of what can happen if vigilance is not maintained.

Mud Pond

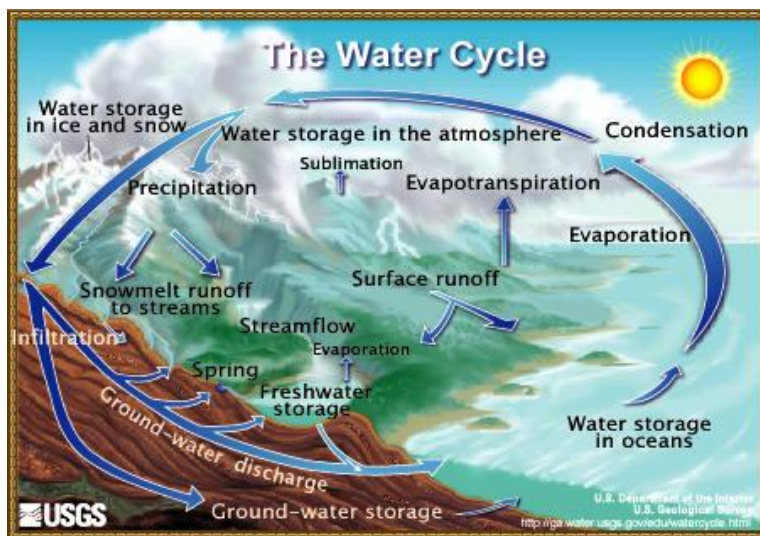
Mud Pond is the only other lake of any size within Winslow's borders; and approximately 20% of the pond lies within the town of China. Mud Pond's mean depth of 7 feet, and maximum of 12 feet, makes it appear more like a giant pool than a natural water body. The surface of the lake covers 92 acres, with a volume of 598 acre-feet. Such a shallow pond understandably has a high flushing rate of 4.6, more than double that of Pattee's Pond. The direct watershed of Mud Pond is only 2.6 square miles.



Approximately 85% of Mud Pond is directly surrounded by wetlands, including the entire area within Winslow. This, coupled with shallow water depth, made it unappealing to early settlers. Since there is minimal human activity along the pond's shores, there has never been an organized effort to study Mud Pond's water quality. No data is currently maintained. Nonetheless, the large wetland and undeveloped pond make for pleasant wildlife habitat. Fish such as chain pickerel and largemouth bass enjoy the warm waters. Mud Pond is also listed by Maine DEP as one of the Lakes Most at Risk from New Development, not **Mud Pond** from direct shoreline camps, but from surrounding rural sprawl and attendant environmental runoff.

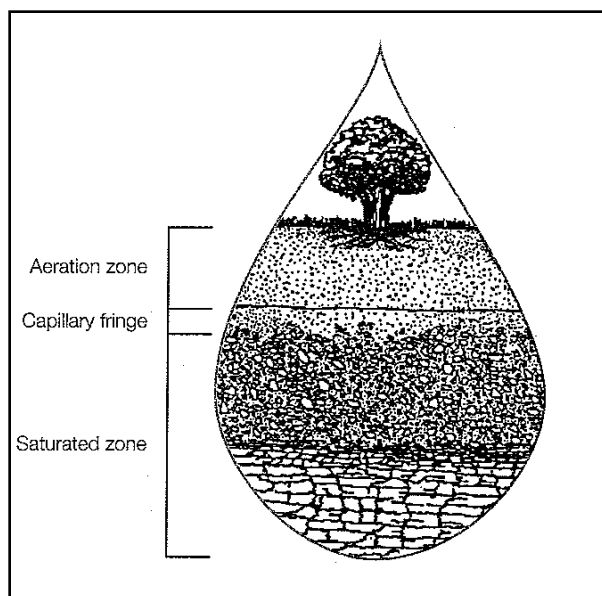
Groundwater

Groundwater is literally water found in the ground, as distinct from surface water or water in the air. In the water cycle, groundwater is a major player and, in fact, water flowing in rivers and streams during low-flow summer season arrives via groundwater. Under natural conditions, plants serve to filter surface water prior to its infiltration into the soil and underground. This benefits not just aquatic life, but also humans, as many people obtain their drinking water from wells that tap deep underground water sources. Over half the homes in Maine rely on private bedrock groundwater wells.



Winslow’s “urban” residents are served by the Kennebec Water District. The District obtains its water from China Lake, filters and treats it, then pumps it to individual homes and businesses. Winslow’s remaining “rural” residents each have their own private groundwater wells. These groundwater wells tap into bedrock water sources. Urbanized areas of town are also served by the Kennebec Sanitary Treatment District, which collects and treats wastewater prior to discharge into the Kennebec River. Rural residents have their own individual septic systems.

There are only two small areas in Winslow that contain significant sand and gravel aquifers, in which water fills all the spaces between soil, sand, and gravel particles. Winslow has not tapped its sand and gravel aquifers, as they are small and distant from the Kennebec Water District service area. It is important to note their location, however, as areas that should be protected from inappropriate land uses such as landfills, industrial and commercial development.



An Aquifer

Figure courtesy ICMA, *The Practice of Local Government Planning*, 2000, p.100

Analysis and Key Issues

Just north of the Winslow-Benton municipal border on the Sebasticook River lies the Benton Falls Dam. Removal of the Fort Halifax Dam has only changed the waterway within the confines of the town of Winslow. Dam removal caused the river's water level to decrease, exposing new soils and riparian² habitat. How the town responds to this change will have dramatic effects on the future of the river.

It is estimated that 85% of Maine's vertebrate species use the riparian habitat at some time during their lives (see figure on next page for specific descriptions of how various species use riparian habitat). In addition to ducks, birds, amphibians, and reptiles, creatures typically associated with water, it is also important to note that many mammals (other than humans) require such habitats. Because shorelands have a high concentration of prey species, predators

² Riparian is used interchangeably with "shoreland." The riparian habitat is simply that transition area between uplands and water bodies or unforested wetlands.

such as bobcats, red fox, and fishers spend more time hunting there than in other areas. These animals, plus others such as moose and deer, use riparian habitat extensively as travel corridors, and several species of bats that hunt insects primarily over open water and wetlands roost in riparian habitats. As the dam removal exposes new habitat, the town should use caution in approving new development proposals along the Sebasticook shoreline.

Wetlands and riparian habitats also protect aquatic species. Streamside forests help maintain water quality by absorbing pollution. Riparian woods also shade the water, keeping it cool and helping to maintain adequate oxygen levels. Trees also supply leaves that are the primary source of food for many aquatic insects, which in turn are the primary source of food for trout and young salmon. Finally, proper riparian buffers simply screen human activity, contributing to a thriving wildlife population.

While removal of the Fort Halifax Dam provides an immediate opportunity to reassess the riparian habitat along the Sebasticook River, all waterbodies in Winslow contain riparian habitat. Pattee's Pond contains extensive wetlands along its outlet, and Mud Pond is smaller than its surrounding wetlands. Residents should work to preserve these wetlands, and enhance riparian habitat surrounding rivers and streams. These areas also provide important flood control, and can literally save residents thousands of dollars in damage. Since many roads run alongside waterways, road maintenance crews must use best management practices in daily operations.

One method that has proven its worth in other locales is collaboration. Currently, the Pattee's Pond Association has regular meetings, and recently helped conduct a major watershed survey report for the pond. Hopefully, this will lead to state and federal funding of larger remediation projects. It would be beneficial for the municipal government to partner with the Pattee's Pond Association in maintaining water quality. Similarly, Kennebec-Messalonskee Trails is a non-profit group dedicated to promoting, creating, and maintaining trails "along our waterways, connecting the communities of Waterville, Winslow, Benton, Fairfield, and Oakland." This group recognizes the value of water. The more the public interacts with its waterways, the more appreciation that same public will have for them, and the more they will understand the importance of preservation.

How Maine Wildlife Uses Shoreland Habitat

Wide Shoreland Habitat Conservation Area (600 ft. or more) ¹	
Wood turtle	Nests in dry, sandy uplands typically within 900 ft. of slow-moving streams
Spotted turtle², Blanding's turtle²	Nest and travel in uplands; feed and winter in vernal pools, small streams, and wetlands ³ in Southern Maine. The Maine Department of Inland Fisheries and Wildlife recommends conserving habitat within ¼ mile of known populations.
Spotted salamander, wood frog	Breed in vernal pools but reside in adjacent forest. Biologists who study vernal pool species recommend no site disturbance within 100 ft. of the pool and limiting development to 25 percent of the zone from 100-750 ft.
Northern leopard frog, pickerel frog	Move into wet meadows and fields near wetlands after the breeding season. Dispersing juveniles may be found up to 2,600 ft. from water.
Great blue heron	Nests in colonies, typically near water but sometimes in uplands. Sensitive to development within ¼ mile.
Osprey, bald eagle²	Nest in large trees up to three miles from water; usually within 2,300 ft. State rules require a ¼ mile buffer around eagle nests.
Moose	In summer, feeds in wetlands, rivers, and ponds in extensive forests. Typically requires blocks of forest 1,000 acres and larger.
Bats (red, silver-haired, little brown myotis, small-footed myotis, eastern pipistrelle)	Forage over open water (streams, ponds, wetlands) and roost in forests within 1,100 ft. of water. Roosting and nesting habitat varies by species and includes large trees with cavities or loose bark and canopies of large deciduous trees.
Wood duck, common goldeneye, hooded merganser, common merganser	Nest in cavities in large trees typically within 600 ft. of inland streams, rivers, lakes and ponds. Limited by availability of cavity trees.
Mallard, black duck, green-winged teal, blue-winged teal	Nest on ground in dry or marshy areas, typically within 600 ft. of water. Very sensitive to human disturbance and susceptible to predation from pets and other animals.
Forest-interior birds (red-shouldered hawk, wood thrush, hermit thrush, red-eyed vireo, black and white warbler)	Red-shouldered hawks nest in bottomland forests of more than 500 acres near wetlands, ponds, and rivers and over 3,000 ft. from the nearest house. Forest songbirds prefer blocks of mature forests 250 acres or larger, which are often associated with shoreland areas. As forest is converted to other uses, larger patches (500+ acres) are preferred by some species.
Medium Shoreland Habitat Conservation Area (330-600 ft.)	
Snapping turtle	Inhabits ponds, rivers, marshes, and tidal fresh water with muddy bottoms. Nests in open upland sites with light soils within 400 ft. of water.
Star-nosed mole	Feeds in wet, mucky soil within 330 ft. of water.
Beaver	Feeds on deciduous trees within several hundred feet of ponds and slow-moving streams.
River otter	Home range may encompass up to 50 linear miles of waterways.
Mink	Dens in uplands under logs, rocks, or tree roots adjacent to water.
Bobcat, red fox, coyote, fisher	Prey on animals within the shoreland zone and use shorelands as a travel corridor. Research in Maine has shown that these species are found within 330 ft. of water 85 percent of the time.
Narrow Shoreland Habitat Conservation Area (75-250 ft.)	
Brook trout, landlocked salmon, Atlantic salmon⁴	Found in coldwater streams, ponds, and lakes in forest-dominated watersheds. A forested buffer that increases with slope, runoff potential, and declining canopy cover will minimize stream sedimentation. Within this buffer harvesting that leaves a well-distributed stand and an uncut buffer of 25 ft. wide or more will moderate stream temperatures and provide food to stream animals. Clearing forests for other uses within the watershed is detrimental to coldwater fisheries.
Dusky salamander and spring salamander	Inhabits edges of intermittent and small perennial forest streams. Significant population declines occur in watersheds that are less than 80 percent forested.
Tree swallow	Nests in tree cavities within 300 ft. of water.

1. Desired conservation zone width may vary with species present and site characteristics. For detailed shoreland habitat management information and guides, see page 8. You also may want to contact a regional biologist.
 2. Threatened or endangered species. Check Beginning with Habitat maps for possible locations (see page 8) and, if species are present, consult with Maine Department of Inland Fisheries and Wildlife.
 3. Wetlands, as used here, includes only those wetlands with seasonal or permanent standing water that provides aquatic habitat, such as vernal pools, swamps, marshes, bogs, and fans.
 4. Recommended buffers for Atlantic salmon extend up to 330 ft. depending on site conditions.

Chart courtesy Maine Audubon, *Conserving Wildlife in Maine's Shoreland Habitats*, 2006, p. 4

Policies

- The town should continue to protect current and potential drinking water sources.
- The town should protect surface water resources from pollution and participate in efforts to improve water quality where needed; e.g. in preventing soil erosion around lakes.

- The town should provide public water supplies and sewer service in growth areas, to encourage more intensive development in those areas.
- The town should minimize the effects of direct discharges of wastewater by encouraging upgrade of existing public sewer systems and wastewater treatment facilities.
- The town should cooperate with neighboring communities and advocacy groups to protect both groundwater and surface water resources.

Strategies

- ✓ The town should maintain, update, and enforce all ordinances relating to water quality.

The Code Enforcement Officer should review the following ordinances or regulations: Stormwater Management Law, Shoreland Zoning Law, Maine Pollution Discharge Elimination System Stormwater Program, Allowable Levels of Phosphorous, Floodplain Management. The CEO should present to the Planning Board any changes that must be made to the town ordinances to bring them up to state and/or federal standards. The Planning Board would then make official recommendations for approval by the Town Council. The CEO should make his presentation to the Planning Board in 2009.

- ✓ The town should modify land use ordinances to incorporate low impact development techniques.

The Comprehensive Plan Implementation Committee should review all regulations dealing with land use, such as zoning, subdivision and streets. They shall make recommendations to the Planning Board for modifying these ordinances to incorporate low impact development practices. If the Planning Board approves, they can then make official recommendations for Code changes to the Town Council. The recommendations should be made to the Planning Board by 2010.

- ✓ The town should provide best management practices literature to farmers and loggers.

The Comprehensive Plan Implementation Committee should contact the state and federal departments of agriculture, for Best Management Practices literature. The committee should then present the literature to the Planning Board. The Planning Board can work with the town assessing office to mail

literature to all registered farmers and loggers in Winslow. The Planning Board should also encourage the farmers and loggers to meet with the Planning Board to discuss the importance of best management practices. The Implementation Committee should present literature to the Planning Board by 2009.

- ✓ The town should evaluate relative costs of low impact development and standard stormwater treatment for the maintenance of public facilities, including roads.

The Comprehensive Plan Implementation Committee should present its findings on low impact development to the Town Council, recommending that the Council adopt low impact development practices for all public facilities, especially maintenance of town roads. The committee should make its presentation by 2010.

- ✓ The town should participate in local and regional water quality collaborative efforts.

Virginia Brackett, a teacher at the Winslow Junior High School, was recently awarded a watershed protection grant. Ms. Brackett used this money to assist her students in mitigating an erosion problem on Pattee's Pond. This was a collaborative effort with the Pattee's Pond Association. The Town Manager should contact Ms. Brackett, and discuss how this project could be expanded to an annual effort. The Town Manager should contact the teacher in 2009.

The Planning Board should maintain a positive relationship with Kennebec-Messalonskee Trails, the Pattee's Pond Association, the Kennebec Soil and Water Conservation District, and the Kennebec Valley Council of Governments. These relationships can be used to assist the Planning Board in reviewing development proposals, and updating ordinances.

- ✓ The town should prevent invasive species from infiltrating Winslow's waters.

The Planning Board should encourage the Pattee's Pond Association to work with the Maine Congress of Lake Associations (COLA). COLA has many resources available to help the Pattee's Pond Association keep the Pond invasive-species free. The Planning Board should request that the Pattee's Pond Association report to the Planning Board and Town Council on the status of Pattee's Pond every fall. Initial presentations can occur in 2011.